

DAILY RESEARCH, 5 AGUSTUS 2020

PT PROFINDO SEKURITAS INDONESIA

**GD PERMATA KUNINGAN LT 19
JL KUNINGAN MULIA KAV 9C GUNTUR SETIABUDI JAKARTA SELATAN 12980**

TELP +62 21 8378 0888

EMAIL : CUSTOMERSERVICE@PROFINDO.COM

WWW.PROFINDO.COM | PROCLICK.PROFINDO.COM

MARKET MOVERS



Bursa saham AS ditutup menguat setelah didorong stimulus Pemerintah AS untuk penanggulangan Pandemic Corvid 19. **DOW +0.62%, S&P +0.36%, NASDAQ +0.35%**

Bursa saham Eropa ditutup mayoritas menguat didorong kebijakan stimulus baru Pemerintah AS terkait Corvid 19. **Indeks DAX -0.36%, FTSE +0.05%, CAC +0.28%**

Bursa Saham Asia dibuka mayoritas menguat setelah rilis data Ekonomi AS yang membaik dan kebijakan Stimulus baru Pemerintah AS untuk mengatasi Pandemic Corvid 19. **Hang Seng +2%, KOSPI +0.72%, Nikkei -0.76%**

Harga minyak mentah dunia melemah setelah OPEC dan negara-negara produsen minyak mentah berencana meningkatkan produksi. Harga emas ditutup menguat mengukir rekor tertinggi sepanjang sejarah setelah instrument ini menjadi pilihan investor untuk mengamankan asset mereka ditengah ketidakpastian pemulihan ekonomi Global terkait semakin meningkatnya kasus Corvid 19. **WTI -0.43%, Brent Oil -0.18%, Gold +0.75%.**

IHSG pada perdagangan hari ini diperkirakan akan **BEARISH** dengan Range pergerakan **4928-5157** dengan saham-saham yang dapat diperhatikan : **KRAS ANTM KAEF JSMR BSDE TKIM**

MARET DATA

AMERIKA

DOW 30	26,828.47	+164.07	+0.62%
S&P 500	3,306.51	+11.90	+0.36%
NASDAQ	10,941.17	+38.37	+0.35%

EUROPE

DAX	12,600.87	-46.11	-0.36%
FTSE 100	6,036.00	+3.15	+0.05%
CAC 40	4,889.52	+13.59	+0.28%

ASIA

SHANGHAI	3,371.57	-0.12	-0.11%
HANGSENG	24,946.63	+488.50	+2.00%
SET	1,330.81	+9.58	+0.73%
KOSPI	2,296.47	+16.50	+0.72%
JCI	5,075.00	+68.78	+1.37%
NIKKEI	22,401.50	-172.16	-0.76%
ASX	5,980.80	-56.80	-0.94%

COMMODITIES

GOLD	2,023.55	+15.05	+0.75%
WTI OIL	41.52	-0.18	-0.43%
BRENT OIL	44.26	-0.08	-0.18%
COAL	58.58	-0.10	-0.17%
PALM OIL	2890	+40	+1.40%
TINS	17,767.50	-85.00	-0.48%
NICKEL	14,067.50	+72.50	+0.52%

EVENT & ECONOMIC CALENDER

ECONOMIC CALENDER :

INDONESIA

30820	MARKIT PMI MANUFACTURING (JUL) INFLATION RATE (MoM) JUL TOURIST ARRIVAL (YoY) JUN
50820	LOAN GROWTH (YoY) JUN GDP GROWTH (YoY) JUL BUSSINES CONFIDENCES Q2
60820	CONSUMER CONFIDENCE (JUL)

GLOBAL

030820	JPN GDP Q1 (QoQ) GERMAN MARKIT PMI MANUFACTURING (JUL) BRITISH MARKIT PMI MANUFACTURING (JUL) FRANCE MARKIT PMI MANUFACTURING (JUL) EUROPE MARKIT PMI MANUFACTURING (JUL) US MARKIT PMI MANUFACTURING (JUL)
040820	KOREA INFLATION RATE (MoM) JUL JAPAN CORE CPI (JUL) AUSTRALIA TRADE BALANCE (JUN) AUSTRALIA RETAIL SALES (JUN) EUROPE PPI (MoM) JUN
050820	US API CRUDE OIL STOCK CHANGE HONG KONG MARKIT PMI (JUL) EUROPE RETAIL SALES (MoM) JUN BANK OF JAPAN GOV KURODA SPECH US TRADE BALANCE (JUN)
060820	KOREA CURRENT ACCOUNT (JUN) BANK OF ENGLAND INTEREST RATE DECISION BANK OF ENGLAND QUANTITATIVE EASING US INITIAL JOBLESS CLAIMS
070820	CHINA TRADE BALANCE (JUL) GERMAN TRADE BALANCE (JUN) FRANCE TRADE BALANCE (JUN) US NONFARM PAYROLS (JUL)

CORPORATE ACTION :

DEVIDEN

040820	UNVR RP 107 (CUM 0408, PAYMENT 1908) SMSM RP 19 (CUM 0408, PAYMENT 2508) AKRA RP 50 (CUM 0408, PAYMENT 1308)
050820	PGLI RP 1 (CUM 0508, PAYMENT 2608) ABDA RP 60 (CUM 0508, PAYMENT 2608)
060820	XCID RP 0.7984 (CUM 060820, PAYMENT 2408) SRSN RP 2 (CUM 0608, PAYMENT 2808) INTP RP 500 (CUM 0608, PAYMENT 2808)

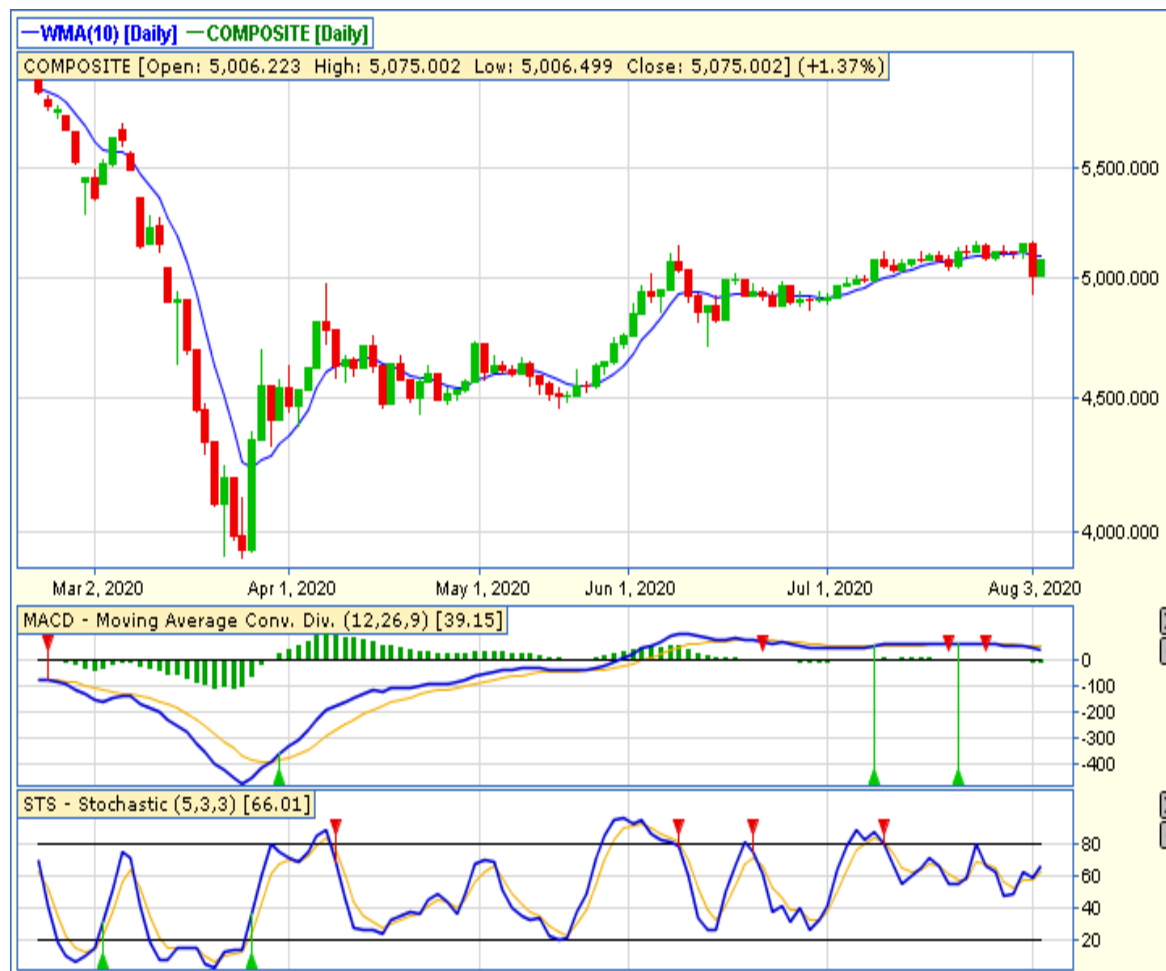
RUPS

30820	TOTO INDX BLUE APII
040820	WTON KIOS IPCC
050820	TPIA SMBR PURA PGJO MTPS INDO FPRZ DFAM DEAL CLAY BCIP APEX ANDI ACES
060820	RUIS MTLA BRPT BAPA AMFG
070920	SINI RODA RMBA REAL PEGE PANI MLIA LPGI BSMR AMAN

IPO

RIGTH ISSUE

JAKARTA COMPOSITE INDEX



PREVIOUS 4 AGUSTUS 2020

CLOSING	5075.002	+1.374%
TRANSACTION	IDR 8.52 TRILLION	
FOREIGN NETT	IDR 50 BIO (SELL)	

PREDICTION 5 AGUSTUS 2020

BEARISH (MIXED)
RANGE 4982-5157

BULLISH HARAMI
STOCHASTIC : GOLDEN CROSS
MACD : HISTOGRAM NEGATIF DAN NETRAL

TECHNICAL RECOMENDATION



KRAS – PT KRAKATAU STEEL (PERSERO) TBK

CLOSING 4/8/2020 RP 360 (+1.7%)

BUY

TARGET PRICE 424

STOPLOSS < 350

BULLISH HARAMI

STOCHASTIC : OVERSOLD

MACD : HISTOGRAM NEGATIF DAN DOWNTREND

TECHNICAL RECOMENDATION



ANTM – PT ANEKA TAMBANG TBK

CLOSING 4/8/2020 RP 705 (+0.71%)

BUY

TARGET PRICE 750

STOPLOSS < 700

BULLISH HARAMI

STOCHASTIC : OVERSOLD

MACD : HISTOGRAM POSITIF DAN UPTREND

TECHNICAL RECOMENDATION



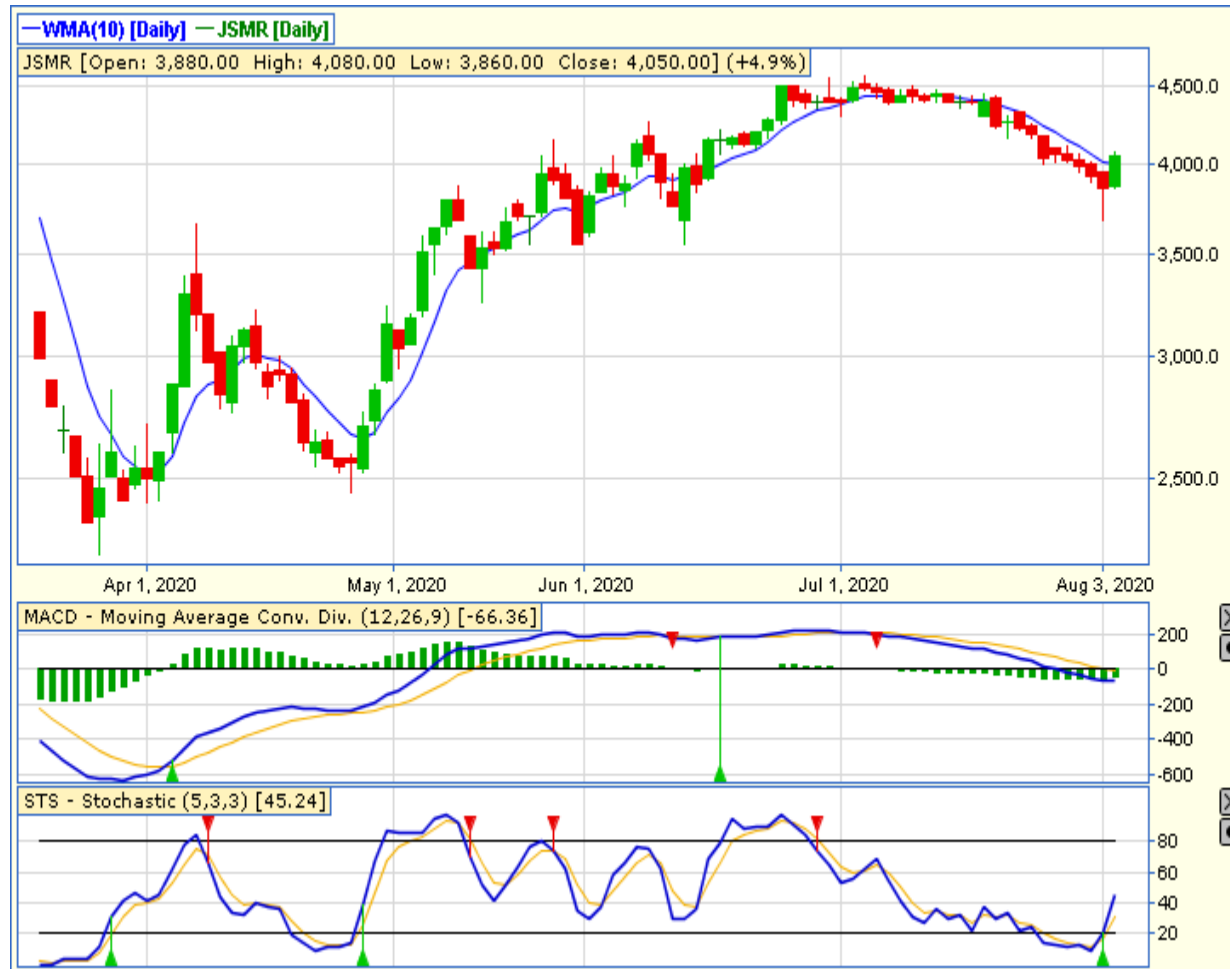
KAEF - PT KIMIA FARMA TBK

CLOSING 4/8/2020 RP 2280 (+8.1%)

**SELL ON STRENGTH
TAKE PROFIT 2570**

**BULLISH HARAMI
STOCHASTIC : GOLDEN CROSS
MACD : HISTOGRAM POSITIF DAN UPTREND**

TECHNICAL RECOMENDATION



JSMR – PT JASA MARGA TBK

CLOSING 4/8/2020 Rp 4050 (+4.9%)

**SELL ON STRENGTH
TAKE PROFIT 4300**

**MORNING STAR
STOCHASTIC : UPTREND
MACD : HISTOGRAM NEGATIF MENGECEIL DAN
BERSIAP GOLDEN CROSS**

TECHNICAL RECOMENDATION



BSDE – PT BUMI SERPONG DAMAI TBK

CLOSING 4/8/2020 RP 665 (+1.5%)

BUY

TARGET PRICE 780

STOPLOSS < 650

BULLISH HARAMI

STOCHASTIC : OVERSOLD

MACD : HISTOGRAM NEGATIF MENGECEIL DAN LOWER AREA

TECHNICAL RECOMENDATION



TKIM – PT PABRIK KERTAS TJIWI KIMIA TBK

CLOSING 4/8/2020 RP 6600 (+4.8%)

**SELL ON STRENGTH
TAKE PROFIT 7175**

**BULLISH HARAMI
STOCHASTIC : OVERSOLD
MACD : HISTOGRAM NEGATIF MENGECIL DAN
DOWNTREND**

RESEARCH TEAM



YULIANA

**RESEARCH ANALYST &
CORPORATE FINANCE**



DIMAS WP PRATAMA, CSA

TECHNICAL ANALYST

EQUITY CAPITAL MARKET TEAM



JESSIE JAMES

HEAD OF EQUITY SALES



PRASETYO NUGROHO

HEAD OF DEALING ROOM



GABRIELLA PRATIWY

HEAD OF ONLINE TRADING